

Japan America Society of Minnesota



通 信

The Tsushin is a membership publication of the Japan America Society of Minnesota

February 2024 Vol. 33, No. 2

Greetings from Consul-General Jun Yanagi, the Consulate General of Japan in Chicago

Dear Friends in Minnesota and North Dakota,

Since my arrival in the Midwest on August 22nd, 2023, I have visited Minnesota three times. Each visit has left me heartened by the vast number of individuals who significantly contribute to fostering Japan-US relations in a multitude of ways. Each person's unique story has provided me with valuable insights and inspiration, stimulating my ongoing contemplation and understanding of the dynamics of the Japan-US relationship.



Last November, I attended JASM's annual Mondale Award and Scholarship Gala Dinner. There, I learned much about the indispensable role JASM has played in promoting Japan-Minnesota relations for over half a century, and their dedication to preserving the legacy of the late former Vice President Walter Mondale. Last December, I met with Governor Tim Walz, who has expressed his leadership and commitment to further enhancing Japan-Minnesota's economic ties. I also attended the End of the Year Party of Minnesota JETAA, which will host the JETAA US National Conference this year.

During these visits, I toured various Japanese business

facilities, and at one tour I had the pleasure of being accompanied by the mayor of that host city. I am glad to see these Japanese companies are contributing not only to regional economic employment, but also to local communities, and thereby, have been welcomed and admired by local authorities and residents alike. The Consulate-General of Japan has recently restarted our "Grassroots Caravan" to enhance local communities' understanding of Japanese companies' contributions, as well as to foster two-way trade and investment opportunities.

The year of 2024 (and continuing until the end of March 2025) has been designated as the year of Japan-US Tourism, which anticipates an increase not only in two-way tourism but also in various forms of people-to-people exchanges, including business and sister city interactions. Notably, 2025 will mark the 70th year anniversary between St. Paul and Nagasaki, the oldest sister city relationship between the US and Japan.

Lastly, I would like to express my gratitude and respect for the "KIZUNA", the bond of trust built by all of you involved in Japan-Minnesota relations. Our team at the Consulate-General is committed to advancing Japan-US relations across the ten Midwestern States in collaboration with all of you.

I wish you and your families a wonderful and fulfilling New Year.

Consul-General of Japan, serving ten Midwestern States
YANAGI, Jun

Revealing the Guest Speaker and the Cultural Exhibitor for New J-Quiz 2024 (Online) Everyone is welcome!



Sydney Michael

As we announced in the previous Tsushin article, this year's J-Quiz will take place **online on Sunday, February 11th**. JASM's new J-Quiz 2024 is for anyone of any age who is interested. [Register today!](#)

Our guest speaker, **Sydney Michal**, currently serves as a Coordinator for International Relations in Yamaguchi Prefecture through the JET Programme. Raised in Wisconsin, she studied Japanese and Teaching English as a Second Language at the University of Minnesota - Twin Cities. She served as JASM's Event Coordinator in 2017, and is currently on the board of directors for the Yamaguchi Japan-America Society.

With a passion for Japanese language, media, and culture, Sydney is looking forward to sharing her experiences with you all.

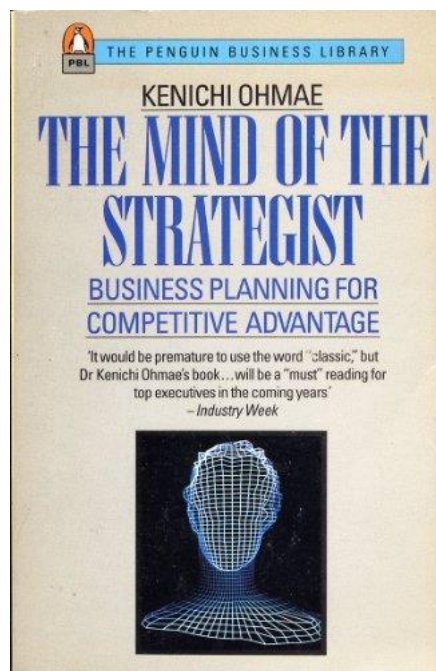


A cultural video will be provided by **Kazumi Kataoka** who has lived in Minnesota for more than 20 years. She is a furoshiki enthusiast and wants to promote the use of furoshiki as an alternative to wasteful wrapping paper and plastic bags. She founded a website "BAGSTITUTE.COM" and spreads awareness on how multifunctional and versatile a furoshiki is.



Tom Haeg's Book Review

The Mind of the Strategist; Kenichi Ohmae; McGraw Hill Publishers, 1991. *International Flight Attendant Manual*; 2008.



On January 2, 2024, Japan Airlines (JAL) flight 516 from Sapporo to Tokyo landed at Haneda Airport and then collided with a Japanese coast guard aircraft waiting to take off loaded with relief supplies for earthquake victims in western Japan. Four of the five coast guard crew members died when their aircraft exploded. The JAL Airbus 350 was engulfed in smoke and flames. After coming to a halt, the five flight attendants successfully deplaned all 367 passengers and 12 crew in record time notwithstanding inoperable exits, obstructed chutes, failed public address system, pitch dark cabin, and the

suffocating smoke and flames billowing from the fuselage stern and wings. All survived. Minutes after evacuation the plane burst into flames. How did they do this? Let's see.

Ohmae wrote *The Mind of the Strategist* in 1991 for up-and-coming Japanese business executives. It taught focus, discipline and problem-solving in managerial decision-making situations under stress. To me, its principles are easily transferable to other occupations; they are not dissimilar to the aphorisms written in 1645 by Miyamoto Musashi in *Go Rin no Sho (The Five Rings)* which taught samurai to be samurai. On the other hand, the [Flight Attendant Manual](#) is the international standard how-to guide for all flight attendants. It specifically addresses a detailed methodology to deplane in an emergency. The five flight attendants without hesitation adopted this evacuation mode on January 2 because they probably knew it verbatim: "Remain seated until the plane comes to a halt!" "Leave your baggage!" "Don't push!" But to execute it under those horrific conditions? *Osugoi!*

Now I am not naïve to believe that the JAL flight attendants actually read *Strategist*. No need to. They likely instinctively knew its teachings by proxy through *Go Rin no Sho* since they were raised in a culture embracing identical tenets enabling them to miraculously execute life-saving strategies while risking their own lives. They were calm and deliberate under extreme pressure. They exuded leadership traits promoted by the *Strategist* which when coupled with the craft and techniques of the *Manual* and when practiced assiduously by all flight attendants, achieved heroism. In other words, the synthesis of these two books explain for me the heroism displayed by the flight attendants. In more words, they immediately became samurai to save the passengers' lives.

And this just isn't my opinion. A New York Times article called it "Miraculous", another correspondent "Incredible" while a JAL spokesperson humbly offered: "...it was the result of training and knowledge brush-ups every year."

And let us not forget that Flight 516 was a Japanese domestic flight. Nearly all the passengers were Japanese. Surprised?

Tom Haeg

JASM Membership Renewal System Updated



Dear JASM members,

JASM is excited to announce that beginning on **March 1**, we will be transitioning to an auto renewal system for membership renewals.

If you have already registered for auto renewal and have a valid credit card on file, your membership will automatically renew. If not, and you wish to renew, you will need to log in and renew your membership manually. When you do this for the first time, you will be set up for auto renewal going forward. To view and manage details about your membership, including your auto renewal status, please use your registered email address to log in to JASM's website.

If you have any questions about your membership, please contact the [JASM Office](#). If you forgot your password, you can reset it here: <https://mn-japan.org/Sys/ResetPasswordRequest>

We would be grateful if you would consider making an additional donation to support JASM activities. You can make a donation to JASM at any time [here](#).

Thank You!
どうもありがとうございます!
Japan America Society of Minnesota

Membership News (12/21, 2023 – 1/20, 2024)

Thanks to the following new JASM members:

Jason Burnett, Ann Schulte

Thanks to the following renewing JASM members:

Michael & Carol Johnson, Steven Kreitz,
Zanne la Rosa, Reid Mandel,
Jose Rivera, Lica Tomizuka Sanborn

Thanks to the following Corporate Members:

Surkyk's Liquor and Cheese Shop

Please Help Us Send Good Vibes to Ishikawa Prefecture



Dear JASM members and friends,

I learned that two of our guests from Japan who we hosted in September were affected by the earthquake that happened on January 1. Shioyasu-san (in the first picture on the right)

and Shinbo-san (in the second picture). Shioyasu-san was reunited with her family the other day and went back to her house, without water and power. Shinbo-san may have lost her shop and a part of the house.

As of now, there is not much we can directly do for them, but we created a [comment board](#) to send them words of encouragement and let them know that we are thinking of them. Please go to the website by clicking the button below and click on the "New Post" icon in the top right corner of the screen.

Since this is a very sensitive situation, we will delete anything that we think is inappropriate. Thank you for your understanding. **The link to the comment board was sent to Shioyasu-san and Shinbo-san on January 19th and will be active until February 12th.**



You can add a message, pictures, GIFs and more. Please don't forget to add your name to the post and send your love to Shioyasu-san and Shinbo-san. They finally took a bath for the first time since the earthquake in the portable bath that the Japanese military provided. They are trying to keep their brave faces on and be appreciative of what is provided to them. It is unfathomable to be so humble in their situation. I believe that words from Minnesota will cheer them up a little bit. Please join us to help put a smile on their faces.

Right now, our friends don't have any means to receive any materials or resources. The Consulate General of Japan in Chicago shared the following comment regarding donations.

FROM THE CONSULATE:

First, the official stance of the Japanese Government, as of now, is that Japan welcomes financial support; on the other hand, due to the situation in the affected area and the logistical issues in properly delivering supports from outside, Japan, at least as of now, is not yet ready to receive material assistance—such as food—from abroad.

Second, we checked with our headquarter, but, as of now, the Government don't have any official destination for the donation for the earthquake victims.

Third, as there is no official destination for donations directed by the Japanese Government, here is an English list of potential destination of donations available in general.

Unfortunately, all of the websites do not currently have direct donation information regarding the earthquake in English yet. However, the Japanese Red Cross Society seems pretty good at updating their information every day, and it is also listed as a partner in Ishikawa Prefecture's official website regarding the earthquake donations in Japanese. Hence, for those in the U.S. who wish to donate directly for the earthquake, checking the Japanese Red Cross Society's English website is a good option. Of course, a direct donation to the Red Cross itself (not specially to the earthquake) is available now online in English with credit card payment here: [Japanese Red Cross Society](#)

Thank you very much for your support to Japan and JASM.
Rio Saito, Executive Director

Please thank our members with your support!

Corporate Benefactor Members

Daikin Applied
Delta Air Lines, Inc.
MTS Systems Corporation
Sawai Pharmaceutical Co., Ltd.
Taiyo International

Corporate Patron Members

Dorsey & Whitney LLP
Miller Milling Company

Corporate Sustaining Members

Arctos Law PLLP
Deloitte Tax, LLP
Hamre, Schumann, Mueller & Larson, PC
Japan Lifeline Co. Ltd.
Mall of America
Medtronic, Inc.
Metropolitan Airports Commission
MGK, Inc.
Minnesota Council of Teachers of Japanese
Naigai Industries U.S.A. Inc.
The Bank of Tokyo-Mitsubishi UFJ, Ltd.

Corporate Contributing Members

Briggs and Morgan, P.A.
IACE Travel
Murata Vios Inc.
Satellite Industries, Inc.
Surdyk's Liquor & Cheese Shop
Taft, Stettinius & Hollister LLP
UMEI

Partners in Service

JK's Table
Kiku Enterprises, Inc.
Metoree
Minnesota Trade Office
Saint Paul Saints Baseball Club
Saji-Ya Restaurant
Suishin Restaurant
TOMODACHI
Voyager Group Inc

Nonprofit Members

Concordia Language Villages
Economic Club of Minnesota
Global Minnesota
JETAA Minnesota
JETRO Chicago
JP Network, St. Cloud State University
KCC—Japan Education Exchange
Macalester College Asian Languages & Cultures Department
Minneapolis Japanese School
Minneapolis Institute of Art
Minnesota Orchestra
Mu Performing Arts
NDSU-Emily Reynolds
Historic Costume Collection
Red Wing Sister Cities Commission
Twin Cities Aikido Center
UMN Department of Asian and Middle Eastern Studies
University of North Dakota-Grand Forks
Winona State University Global Studies and World Languages

Sakura Circle Membership

Sam and Mirja Hanson
Noriko Ishida
Bob and Hisayo Luck
John and Hiroko Shade



J-Quiz

Japan-focused trivia event for all!



Hosted by Japan America Society of Minnesota

Sunday, February 11, 2024

10:00 AM to 1:00 PM CST

**The participants can learn and grow their knowledge of Japan!
Our goal for J-Quiz is to increase cultural awareness and understanding and
to bring together people who have an interest in Japan.**

- 30 questions using Kahoot!
- Held online (platform to be announced)
- Booths with information about colleges that offer Japanese classes:
Find your place for keep learning!
- Cultural exhibition videos: Experts will share their knowledge and
skills with us!
- Networking: You can meet and chat with people who are learning
Japanese and share ideas or ask questions!
- The event's stream works best on your computer or tablet, but it's
ok to use your smartphone to participate in the Kahoot.

Sample Quiz ①
Japan's mainland consists of four major islands.
Which one is the largest island?

1. Honshu
2. Shikoku
3. Hokkaido
4. Kyushu



1: Honshu

Sample Quiz ②
Demon Slayer's main character, Tanjiro, has a younger
sister. What is the name of his sister?

1. Natsuko
2. Netsuko
3. Nazuko
4. Nezuko



4: Nezuko

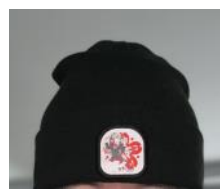
Stay tuned for updates and registration!

This trivia event is free to participate, but JASM appreciates your donation.

Learn more at <https://www.mn-japan.org/event-5360971> or scan the QR code:



J-Quiz 2024 Sponsorship Request



An important mission of JASM is to support Americans who want to learn the Japanese language and learn more about Japan. We know there are so many of you interested in Japanese topics, spending your time studying and reading about Japan. Our goal for J-Quiz is to encourage people to continue their study of Japanese language and culture and have a place to share with like-minded people. **Anyone of any age is welcome**, whether you're a novice or an expert in Japanese language and culture. Please join us!

Starting last year, we decided that this **event registration will be free**. For us to continue to have free registration for this event, we need your help. Please consider sponsoring this event!

As a part of our fundraising effort, we have a Kana-chan beanie this year. With your sponsorship, we will send you a Kana-chan beanie that you can rock! (While supplies last)

- One beanie for **\$250** sponsorship
- Up to Two beanies for **\$500** sponsorship
- Up to Three beanies for **\$1000**



Or, you can donate the beanies and we will have a beanie giveaway for the event participants!

This campaign is made possible thanks to the Temple University Japan Campus.

Japan America Society of Minnesota

- Membership Application ○ Change of Address
- Membership Renewal ○ Tax-deductible Donation

Name _____

Name (2nd adult of a household membership) _____

Address _____

City _____

State _____

ZIP _____

E-mail _____

Phone _____

I would like to make an additional tax-deductible donation of _____

Amount Enclosed: _____
(Please make checks payable to JASM)

Individual Membership

Sakura Circle Membership \$1,200+
Individual\$50
Student\$30
Household\$75
(2 adults plus children under 18)

Japan America Society of Minnesota
P.O. Box 26639, Minneapolis, MN 55426

Japanese Conversation Clubs



Minneapolis Japanese Conversation Club (formerly "Japanese Speaking Club")

The Minneapolis Japanese Conversation Club is an informal

group for those wishing to practice Japanese – all skill levels welcomed! The group also encourages native Japanese speakers who wish to practice their English to join, in addition to chatting in Japanese. Emphasis is placed on free talk, so participants can cover a wide range of conversation topics.

We encourage those just beginning the language as well as native speakers to participate to meet new people, discuss experiences in Japan, or simply to enjoy speaking Japanese with one another.

The group meets bi-weekly on Saturday afternoons at Corner Coffee Uptown, with Zoom meetings between in-person meet-ups. Schedules are posted to the group's Facebook page, at the following link:

<https://www.facebook.com/groups/minneapolisjapaneseclub/>

In-person meeting Location: Corner Coffee Uptown, 1414 W 28th St., Minneapolis, MN 55408

**Note: A short questionnaire is required prior to joining.*
For more details, send an email to group coordinator Will Etkin: will.etkin@gmail.com



Check out another conversation group: Twin Cities Japanese Conversation Meetup Group (<https://www.twincitiesjapaneseconversation.com/>)

The goal of Twin Cities Japanese Conversation Meetup is language fluency in either Japanese or English. This group is for Japanese language learners who want to improve their Japanese speaking skills and/or native Japanese speakers who want to improve their English speaking. Those who just want to help out are also welcome.

Parts to the meetup: 自己紹介 (self-introductions), 質疑応答 (questions and answers about language) and 会話練習 (conversation practice). All meetings and study groups are held in *Discord*.

Current Schedule:

Su 8:30-10a N5 Study Group, Genki Lesson 10

M 7-8p N3の勉強会、「とびら」という教科書での第1課

W 7-8p 日本語会話, alternating weeks of in-person and virtual meetups

Th 7-8:30pm N3の勉強会、「とびら」の第7課

**Note: Proficiency in Hiragana is required prior to joining the group.*

For any question about this group, please email Mariquita Anderson: mariquita@twincitiesjapaneseconversation.com



J | A | S | M

JAPAN AMERICA SOCIETY
of MINNESOTA

P.O. Box 26639
Minneapolis, MN 55426

jasm@mn-japan.org
www.mn-japan.org

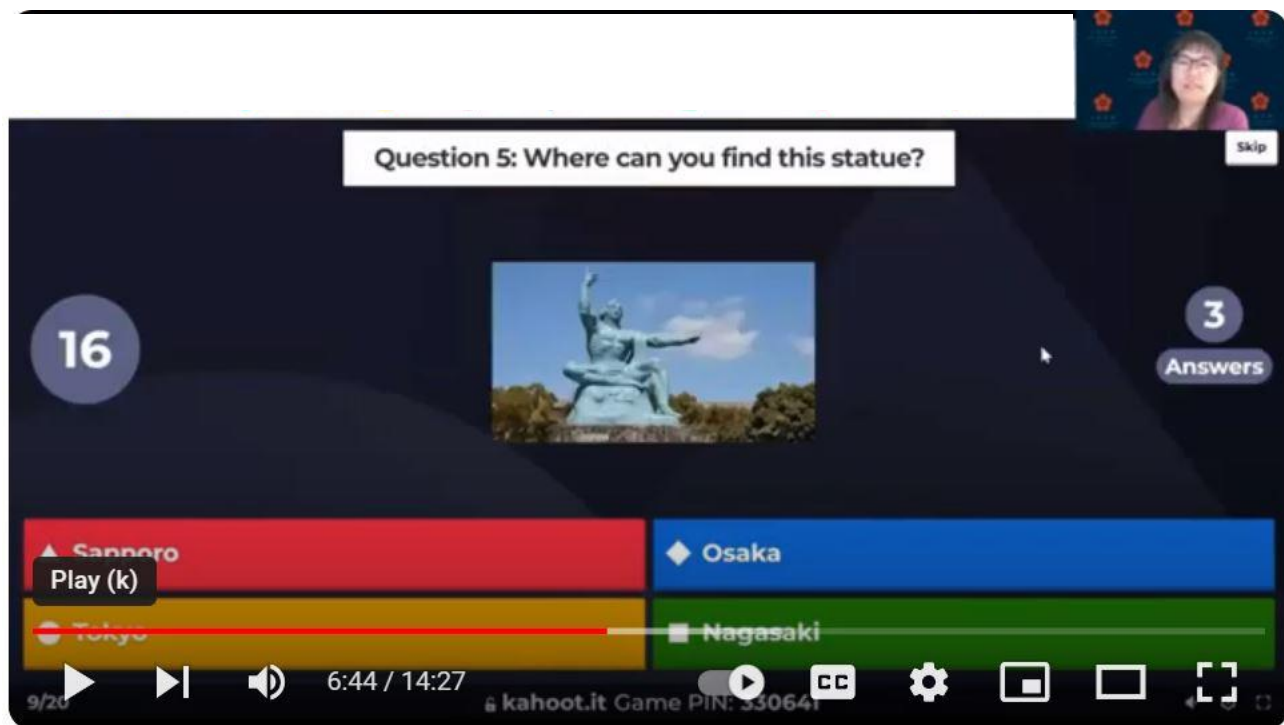
通信

February Tsūshin
2024

The Japan America Society of Minnesota is a non-profit, non-political association engaged in bringing the peoples of Japan and the United States closer together in mutual understanding, respect, and cooperation. Through programs and interchange, it endeavors to promote an appreciation of cultural, educational, economic, public, and other affairs of interest to both peoples. Membership in the society is open to individuals, corporations, and other organizations interested in furthering its programs.

The Japan America Society of Minnesota is a member of the National Association of Japan-America Societies.

Please report any inaccuracies you find in this publication to jasm@mn-japan.com



JASM Demo J-Quiz Video

If you haven't watched the demo video, please watch it by clicking [here](#) or visit [our website](#) and get to know the new J-Quiz!